

The Calling of Jubilee Primary School

A Living Vision of Local Churches

The Jubilee Context

Jubilee Primary School is an ecumenical Brisbane Catholic Education school, which is a living vision of local northern Gold Coast churches:

- St Mary's Catholic Community, Upper Coorparoo
 - Southland Christian Centre – Apostolic Australia
 - New Life Living Community, Pacific Pines
 - Living Rivers United Community, Nerang – Jacobs Well
 - Gold Coast North Anglican Community
- Jubilee is a vibrant, welcoming community which promotes excellence in learning and a shared faith in Jesus Christ.

*"Your Story... My Story...
Our Story"*

JUBILEE Promotes Innovative LEARNING

At Jubilee we aim to build an authentic ecumenical learning community that promotes equity and excellence for all children.

We make this visible through:

- A shared vision for teaching and learning
- Nurturing, celebrating and adapting to the story of each child
- Active engagement in learning
- A shared language and common understandings
- A supportive Christian educational environment

*"The Jubilee Child... a Living
Story"*

Jubilee Nurtures Living FAITH

At Jubilee, we are united through our embracing and sharing of the mission of our covenant churches. We are unique in that we nurture the faith of our children by authentically celebrating the stories of each of these churches.

We make this visible through:

- A school culture immersed in Christian faith, prayer, symbols and action
- An ethos built upon spiritual formation and pastoral care for all God's children
- Authentic celebrations that are true to each faith tradition and reflective of Gospel Values
- Embracing the SCIEC Religious Education Curriculum with respect to each of our Covenant Churches.

"Many stories – One God"

JUBILEE Lives Christian UNITY

Our Jubilee ethos actively fosters and celebrates positive and supportive relationships and a sense of community where all are welcome. We acknowledge and respect the history of our story.

We make this visible through:

- The acknowledgment of and respect for our Indigenous heritage and cultural diversity
- A shared stewardship of our natural, physical and human resources
- Our unity as a community of faith, hope and love committed to following Jesus Christ and his mission
- Open, honest and authentic communication within the community
- The establishment of respectful relationships, which honour commonalities and differences.

"Unity – a story of Community"



CONTACT DETAILS

34 MANRA WAY

PACIFIC PINES QLD 4211

Phone: 07 5502 8566

Fax: 07 5502 8522

Email: pgaven@bne.catholic.edu.au

SCHOOL PERSONNEL

Principal: Mr Matthew Edwards

Deputy/APA: Mr Chris Clurey

APRE: Mrs Joanne Riddell

**Support Teacher (IE):
Mrs Carolyn Stewart**

**Guidance Counsellor:
Mr David Higgins**

Brisbane Catholic
Education Centre

Enrolment Application

and

Support Procedures

for

Students requiring Significant

Educational Adjustments

Introduction and Rationale

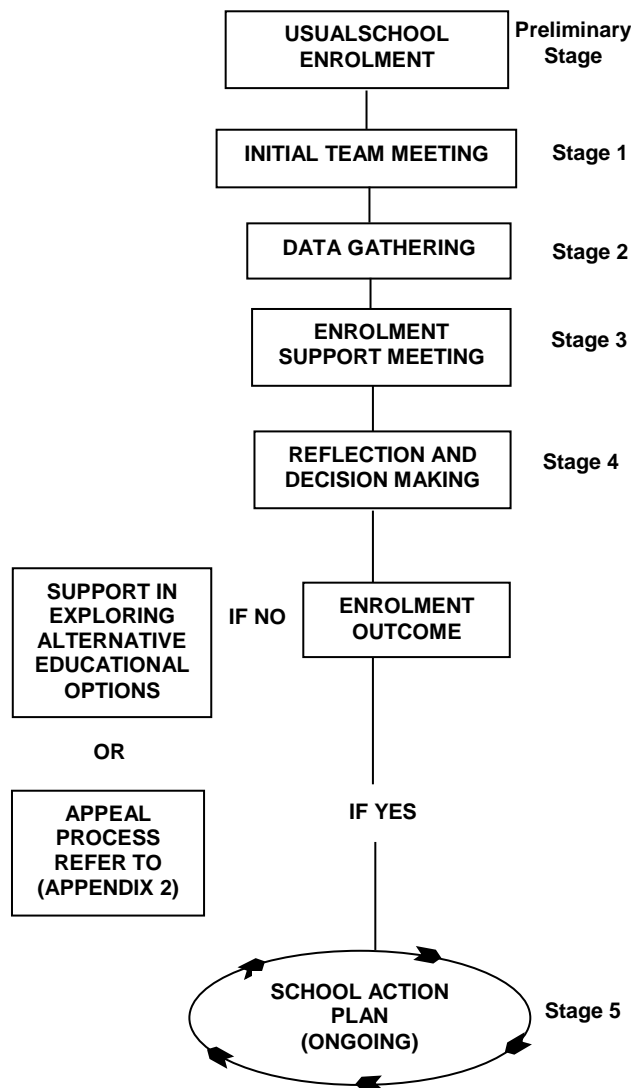
The Enrolment Application and Support Procedures for Students requiring Significant Educational Adjustments operates within the Policy – Students with Disabilities for Brisbane Catholic Education schools. This policy statement, consistent with the Vision Statement and Strategic Renewal Framework 2007-2011, reflects the ongoing commitment of Brisbane Catholic Education to the incorporation of inclusive practices in schools and is guided by the principles of justice as reflected with Church, education and legal areas. The enrolment of a student requiring significant educational adjustments is the concern of the whole school community within the church.

The process seeks to reveal and clarify the characteristics of the learner, and to assess the relevant adjustments for accessing the learning and the implications of these for the school, the family and the student.

A partnership approach is foundational to this process and leads to an appropriate response to the student's educational needs. The enrolment application and support procedures are used when it is considered likely that significant educational adjustments will be needed to support a student's initial enrolment and/or for ongoing service provision.



ENROLMENT APPLICATION AND SUPPORT PROCEDURES For Students requiring Significant Educational Adjustments



Preliminary Stage

- Make Application for Enrolment



Stage 1 Parent Meeting

- **Student Enrolment Team meeting preparation**
- **Partnership Formed**



Stage 2 Data Gathering

- **Observe/Collect Data**
- **Explore Needs**



Stage 3 Enrolment Support Meeting

- **Examine Implications**
- **Partnership Strengthened**



Stage 4 Reflection &

Decision Making

- **Principal Makes Decision**
- **Informs Relevant Others**



Stage 5 School Action Plan

- **Plan Action as Necessary**
- **Ongoing program monitoring & Review of adjustments**
- **Returning to Stage 2 (if necessary)**

